



## VERMONT PHILATELIC SOCIETY

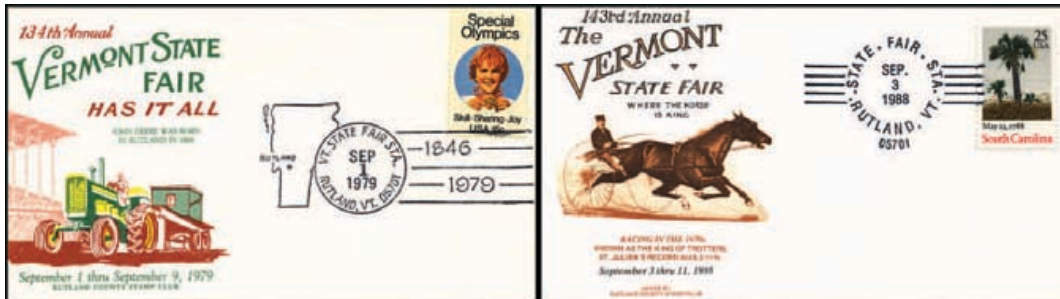
[www.vermontps.org](http://www.vermontps.org)

Meets annually

Glenn A. Estus,

PO Box 451, Westport, NY 12993-0451

[gestus@vermontps.org](mailto:gestus@vermontps.org), 518-962-4558



## MEET THE RUTLAND COUNTY STAMP CLUB

The Rutland County Stamp Club is the oldest stamp club in Vermont. Founded in 1934, it has been a member of the American Philatelic Society since 1951. The 45-member organization meets every other Thursday at 7 p.m. from September through May at the Rutland Health and Rehabilitation Center, 46 Nichols Street in Rutland, Vermont. The club will meet on March 14 and 28 and April 11 and 25.

Recent meetings have included programs on early US rocket mail, World War II adventures, seasonal post cards, and the Thrill of the Hunt. The program on March 14 will be *The Guns of August* by Paul Cook, followed by Phil Mollitor on *Antarctica* on March 28.

From 1953 to 2008, the Rutland County Stamp Club hosted a stamp exhibition at the annual Vermont State Fair. In conjunction with the exhibition, the club sponsored a cacheted cover for each year. The first few years the covers were cancelled by either the regular Rutland hand or machine cancel. Beginning in 1973, a special pictorial cancel was used.

However, as is common with many stamp clubs today, the average age of the members began to advance well into the 50s and perhaps 60s. The last state fair exhibition was in 2008 and thus ended the state fair series of cachets, but 55 years of uninterrupted cachets must be a record.

As can be seen from the two illustrated cachets, horse racing and other farming items are an important part of the Vermont State Fair.

Dues are \$15 a year which includes a monthly newsletter. The club's contact is Michael McMorrow at [MJMCMORROW@COMCAST.NET](mailto:MJMCMORROW@COMCAST.NET).

### ADDENDUM

Contact for the Chittenden County Stamp Club, which was featured in the January-February column is Glenn A. Estus at [GESTUS@VERMONTPS.ORG](mailto:GESTUS@VERMONTPS.ORG). ■