



VERMONT PHILATELIC SOCIETY

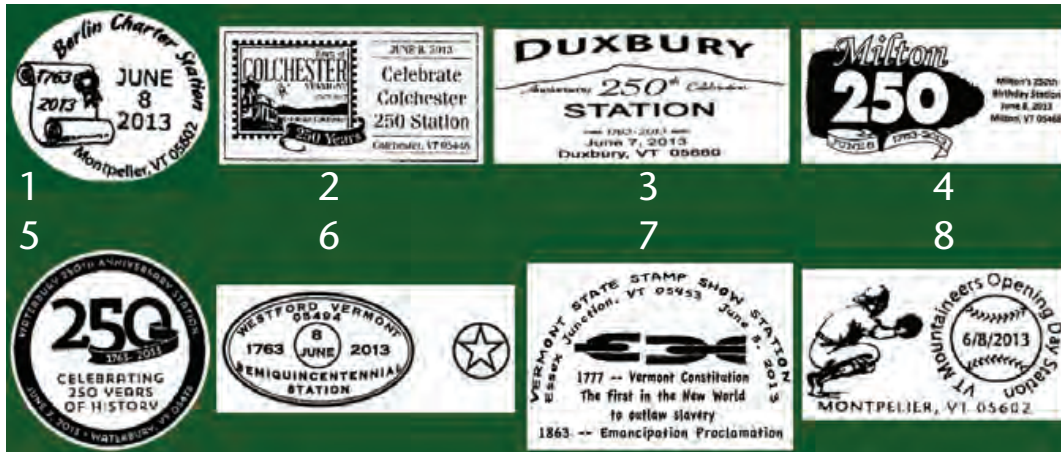
www.vermontps.org

Meets annually

Glenn A. Estus,

PO Box 451, Westport, NY 12993-0451

gestus@vermontps.org, 518-962-4558



PICTORIAL POSTMARKS POPULAR IN VERMONT

Vermont is a very small state, both in terms of population and size. At the most, the greatest distance between two places in Vermont is no more than 250 miles. Keeping this in mind, it is not surprising that many Vermont collectors are interested in collecting the whole state. One active collecting area is pictorial postmarks.

This year marks the 250th anniversary of New Hampshire Royal Governor Benning Wentworth issuing charters for what have become the towns of Vermont. At least twenty-five towns have celebrated this semiquincentennial. Most have had no pictorials, but at least six have — Berlin (1), Colchester (2), Duxbury (3), Milton (4), Waterbury (5), and Westford (6). Berlin's post office closed in 1908, and the town is now served by the Montpelier post office.

Between 1749 and 1764 Wentworth granted charters to 129 towns. Unfortunately, the province of New York also asserted ownership of the land north of Massachusetts and west of the Connecticut River. This disagreement was settled when Vermont became a state in 1791.

The same weekend, Essex Junction had a pictorial for the *VERMONT STATE STAMP SHOW* (7), which commemorated the Emancipation Proclamation, and Montpelier had its annual pictorial for the opening day of the baseball season for the Vermont Mountaineers (8). That makes a total of eight cancels during the weekend. The Montpelier cancels for the Mountaineers started in 2006. This is their eighth consecutive cancel.

I would expect more pictorials this summer as more towns celebrate their anniversaries. If you're interested in Vermont pictorial cancels, view the last twenty years at [HTTP://WWW.GLENNESTUS.COM/VTCANCELS/VTPICTORIALS.HTML](http://www.glenneustus.com/VTCANCELS/VTPICTORIALS.HTML). ■